

## Center School District

### (Scott Valley Area)

(Also see **Rough & Ready** and **Etna**)

The Center School District (Scott Valley Area) was established in 1865 from the Douglas District. The name was changed to Etna District in 1873.

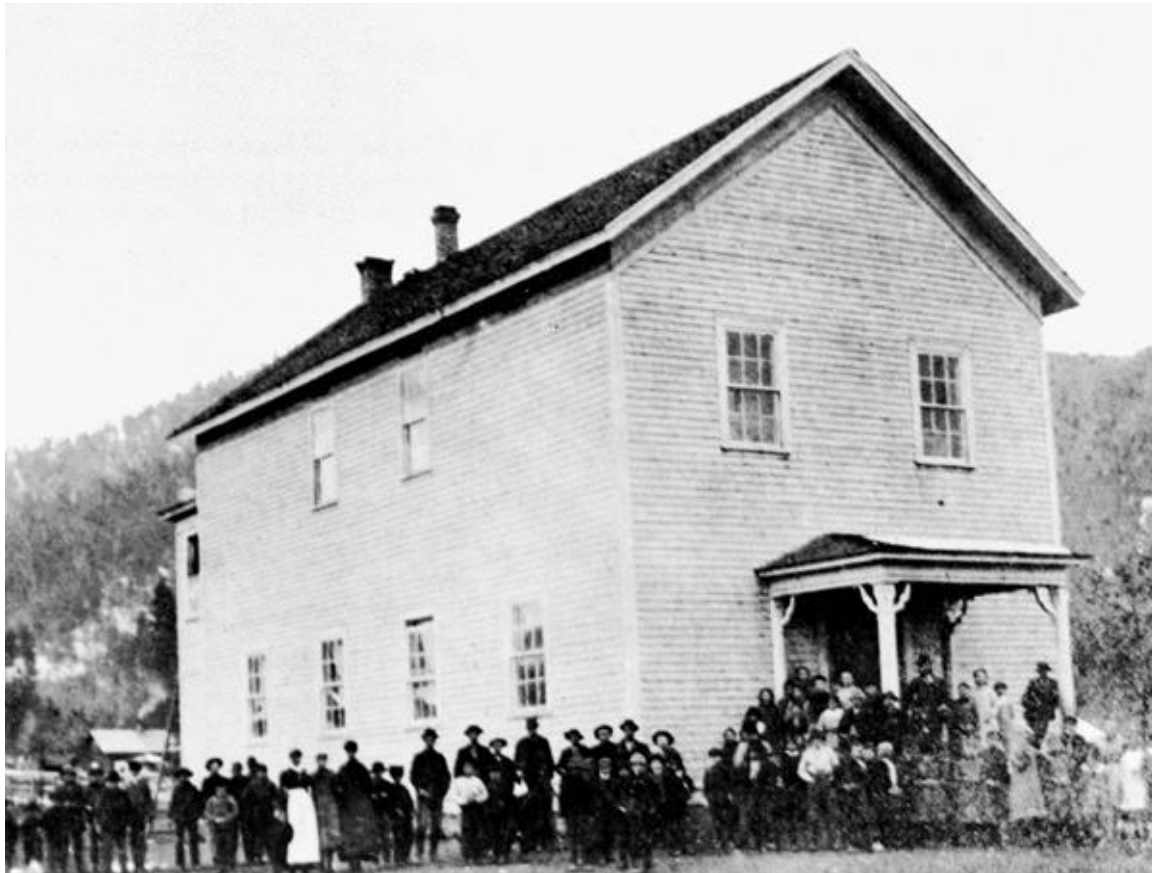
T.N. Stone, County Superintendent, appointed George Smith, Joseph Young, and D.H. Shaw as trustees. Mr. Shaw was the clerk. Mr. F.J. French was employed as a teacher for five months at \$100 per month. The first school was taught in the Etna Hotel, owned by Walker & Brown. The school census in 1868 showed 32 boys and 23 girls.

Miss Clara Caldwell succeeded Mr. French as teacher and taught the next two terms. School was held in an old mill owned by Vagan and Swain, located where the Etna Masonic Hall no is.

#### **Reference in board of Supervisors minutes:**

Established: February 7, 1865 – Boundaries described. It was set off from the Douglas School District 92-477)

November 4, 1873 – Name changed to Etna School District (3-238)



ca. 1880. Siskiyou County Office of Education School History Collection.