

## **Black Butte School District**

The Black Butte School District was formed in 1896. The school house was located at the lumber mill town of Upton, close to the junction of the present Wisner Road and Pine Grove Drive (near Abrams Lake).

In the early 1900's a small sawmill was erected north of Mount Shasta City to supply the railroad with ties, fuel and wood. This was the beginning of the town Upton. At one time the town boasted two wood mills, a large Italian population, schools and post office. By 1905 the mills closed and many of the people moved to McCloud.

At times, school was held in railroad cars as the Southern Pacific maintenance crews and their families moved up and down the railroad.

Records show that in the 1899-1900 school term there were 75 pupils. Mrs. G. Anna Pratt was the teacher for a salary of \$85.00 per month.

The district was named after a prominent lave cinder cone that is part of the extinct Mount Shasta volcano.

No exact record can be found as to what happened to this district. It was probably attached to either Weed Union District or the Mount Shasta Union District. The community of Upton vanished except for a few piles of moldering sawdust and stone culverts of the old railroad spur.

### **Reference in Board of Supervisors minutes:**

Established: April 6, 1898 – Boundaries described (5-547)

April 2, 1901 – Part of Berryvale School District added to Black Butte. Description of area added in Supervisors minutes (6-571)

August 6, 1929 – Black Butte suspended and re-established (15-205)

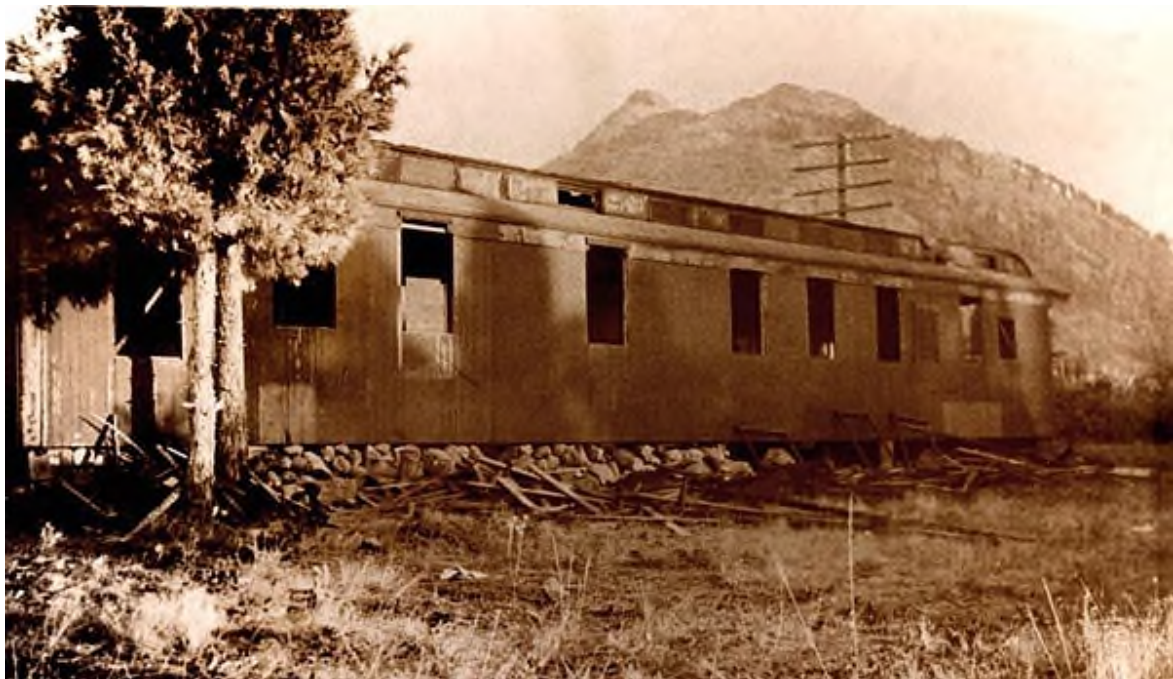
August 5, 1930 – Black Butte suspended and re-established (15-312)



Date unknown. Siskiyou County Office of Education School History Collection.



Black Butte Emergency School held in a train car. Photo by Mildred Grant, donated by Roderick and Larry Grant. Siskiyou County Office of Education School History Collection.



ca. 1935. Photo by Bob Dennis, from the collection of Bob Dais.



Inside the train car which was used as the school. ca. 1935. Photo by Bob Dennis, from the collection of Bob Dais.



View from the Black Butte Emergency School, ca. 1935. Photo by Bob Freeman, from the collection of Bob Dais.



View from the Black Butte Emergency School, ca. 1935. Photo by Bob Dennis, from the collection of Bob Dais.