

## **Butteville Union School District**

The first school was located in the field south of the intersection of Interstate 5 and the Edgewood Road. In about 1920 the school was moved to its present site, where a one-story brick building was erected. This building burned in 1946, and the present school was built on the same site.

The Butteville School District was established in 1865. In 1899 the name changed to Edgewood. In 1935 the Edgewood and Cedar Park Districts were unionized and the name was changed back to the Butteville Union School District. We have no records of the names or the number of pupils prior to 1899 when the name of the school was changed from Butteville to Edgewood.

The teacher for the 1899-1900 school year (seven month term) was N.J. Beaghan. He has 32 pupils. The district was so named because it was on the edge of a thickly forested area. Highway 5 now by-passes the old stage stop and community of Edgewood. The school continues to serve the community, which is still active as a farming center.

### **Reference in board of Supervisors minutes:**

Established: February 7, 1865 – Part of Shasta Valley District, set off to form the Butteville School District No. 7. Boundary description given (2-478)

November 3, 1874 – Boundary change (3-273)

January 1, 1884 – Boundary change (4-192)

April 2, 1889 – Boundary changes, description given (4-421)

July 18, 1899 – Name changed to Edgewood School District (6-403)

July 1, 1935 – Established Butteville Union School District as a result of the unionizing of Cedar Park and Edgewood districts (17-81)

October 8, 1935 – Edgewood, of the Butteville Union, was re-established (17-117)

June 3, 1946 – Bond election (20-116)

June 20, 1946 – Allotment of State school monies (20-133)

July 1, 1946 – Bonds sold (20-139)

April 1, 1947 – Allotment of funds (20-250)

August 2, 1949 – Bonds sold (21-91)

November 21, 1949 – Bonds (21-138)

November 18, 1969 – Transfer territory from Butteville to Weed



ca. 1935. Photo by Mildred Grant, donated by Roderick and Larry Grant. Siskiyou County Office of Education School History Collection.



ca. 1935. Photo by Bob Dennis, from the collection of Bob Dais.



Class. ca. 1935. Siskiyou County Office of Education School History Collection.



Class. ca. 1935. Siskiyou County Office of Education School History Collection.



School sign, ca. 1935. Siskiyou County Office of Education School History Collection.

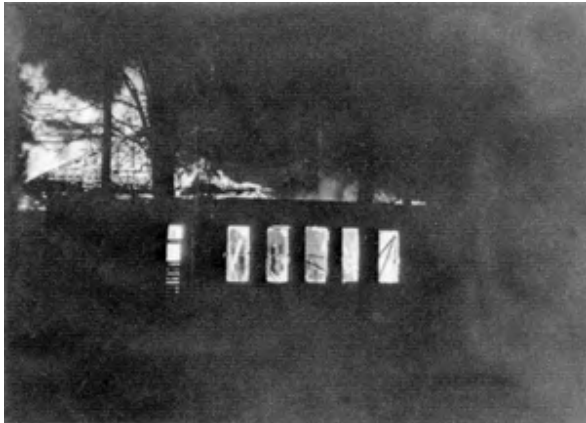
BELOW: The next few pictures were donated by Donald C. Gaubatz, whose parents owned and operated the Edgewood Grocery Store across the street from the school. He states, in the letter accompanying these photos, that "I glanced out the front windows of my parents' store. All of the windows of the Butteville Elementary School, across the street, were glowing with a strange, dancing light. I called my father (Ray C. Gaubatz). Once he saw what I was pointing to, he directed my mother to call neighbors and tell them the school was burning. My father raced across to the street and rang the school's bell until the heat was too great. Neighbors began to assemble. The interior of the building was fully engulfed in flame. Flames were appearing through the shingles of the roof. Soon the leaping flames illuminated the faces of the horrified crowd. There was little that could be done to save the structure. Most of the photographs were taken with a Kodak "Brownie" camera from the front porch of the store."



Before the fire in 1946.



Feb. 6, 1946



Feb. 6, 1946



Feb. 7, 1946



Rebuilt after the fire. , ca. 1948



North and East facing sides of school, date unknown. Siskiyou County Office of Education School History Collection.

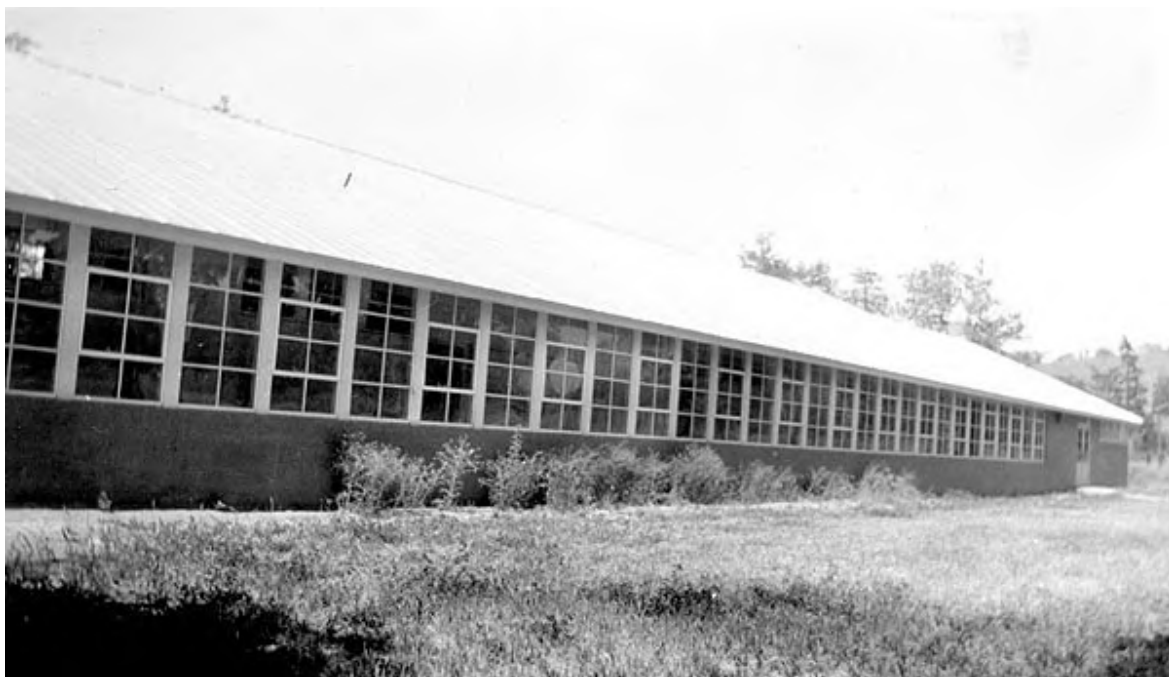


Date unknown. Siskiyou County Office of Education School History Collection.





North and West facing sides. ca. 1950. Siskiyou County Office of Education School History Collection.



Date unknown. Siskiyou County Office of Education School History Collection.