

East Fork School District

The East Fork School District was established on February 26, 1867. The first schoolhouse was located at the foot of School House Hill in Noyes Valley, approximately five miles East of Callahan-Gazelle Road.

In the 1890's the school was moved to a frame building in the lower part of Parker Ranch in Plowman's Valley. Mrs. Cora Walker taught there during the 1893-94 school year. This was a summer school, opening in April and closing in November.

About 1905, the school was moved to the present site. In 1922 the last school, a stone block building, was erected. This structure still stands and is being used as a family residence.

The district was joined to the Callahan District in 1961.

Reference in board of Supervisors minutes:

Established: February 25, 1968 – Boundaries described (2-581)

Month unknown, 1888 – District lapsed (per County Superintendent of Schools Office records)

January 4, 1889 – Consolidated with Callahan (4-394)

April 4, 1892 – Re-established (5-125)

July 6, 1892 – Suspended (19-208)

June 19, 1944 – Re-established (19-307)

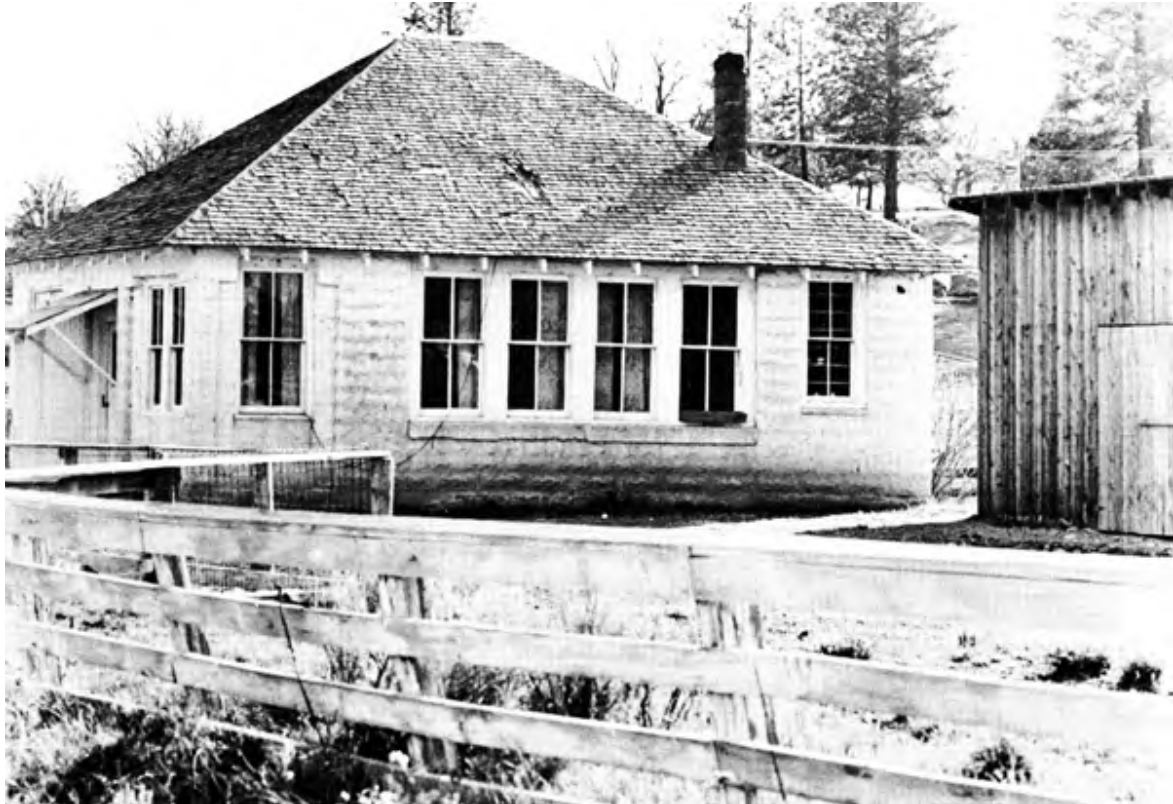
July 28, 1959 – Suspended (26-168)

February 14, 1961 – Unionized with Callahan (27-10)



East Fork School - 1890

1890. Siskiyou County Office of Education School History Collection.



ca. 1923. Siskiyou County Office of Education School History Collection.



1929. Loaned by the Siskiyou County Public Library.



School children, 1929. Loaned by the Siskiyou County Public Library.



ca. 1935. Photo by Bob Dennis, from the collection of Bob Dais.



Scrap metal drive during WWII, ca. 1942. Siskiyou County Office of Education School History Collection.



Rubber tire drive during WWII, ca. 1942. Siskiyou County Office of Education School History Collection.



Scrap metal drive for WWII, ca. 1942. Siskiyou County Office of Education School History Collection.



East Fork students collecting scrap metal, 1942. Siskiyou County Office of Education School History Collection.



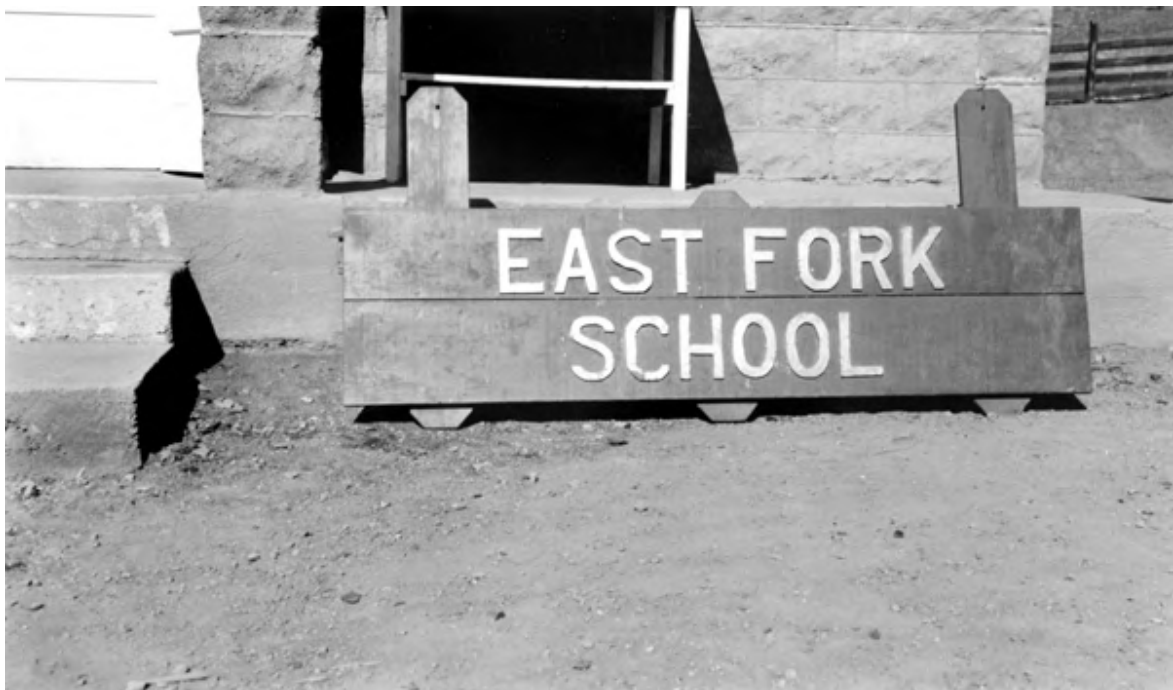
ca. 1944. Photo by Mildred Grant, donated by Roderick and Larry Grant. Siskiyou County Office of Education School History Collection.



Classroom, date unknown. Siskiyou County Office of Education School History Collection.



Students, date unknown. Siskiyou County Office of Education School History Collection.



School sign, date unknown. Siskiyou County Office of Education School History Collection.