

## Excelsior School District

Excelsior District was formed in 1915. The school house was half a mile south of the Junction of Oberlin Road and the Montague-Grenada Road. The building is now being used as a family residence.

School opened in August 1915 with Mary Wolford as the teacher. She taught from August until November, 1915. In November, Vida M. Reese was employed to complete the year. The last teacher was Mrs. Eunice Autenreith for the 1942-43 school year. The district was lapsed and joined with the Grenada School district in 1946.

### Reference in board of Supervisors minutes:

Established: January 5, 1915 – from parts of Montague and Vineland School Districts, boundaries described (10-73)

July 6, 1943 – Suspended (19-208)

August 2, 1943 – Suspension revoked (19-212)

June 19, 1944 – Suspended (19-307)

August 5, 1946 – Lapsed and joined with the Grenada School District 920-151)

October 25, 1946 – Advertise for bids to sell Excelsior School building and grounds (20-187)

December 2, 1946 – Selling old school building contested (20-195 & 20-197)

December 18, 1946 – All bids for sale rejected (20-200)



Date unknown. Siskiyou County Office of Education School History Collection.



School sign, date unknown. Siskiyou County Office of Education School History Collection.

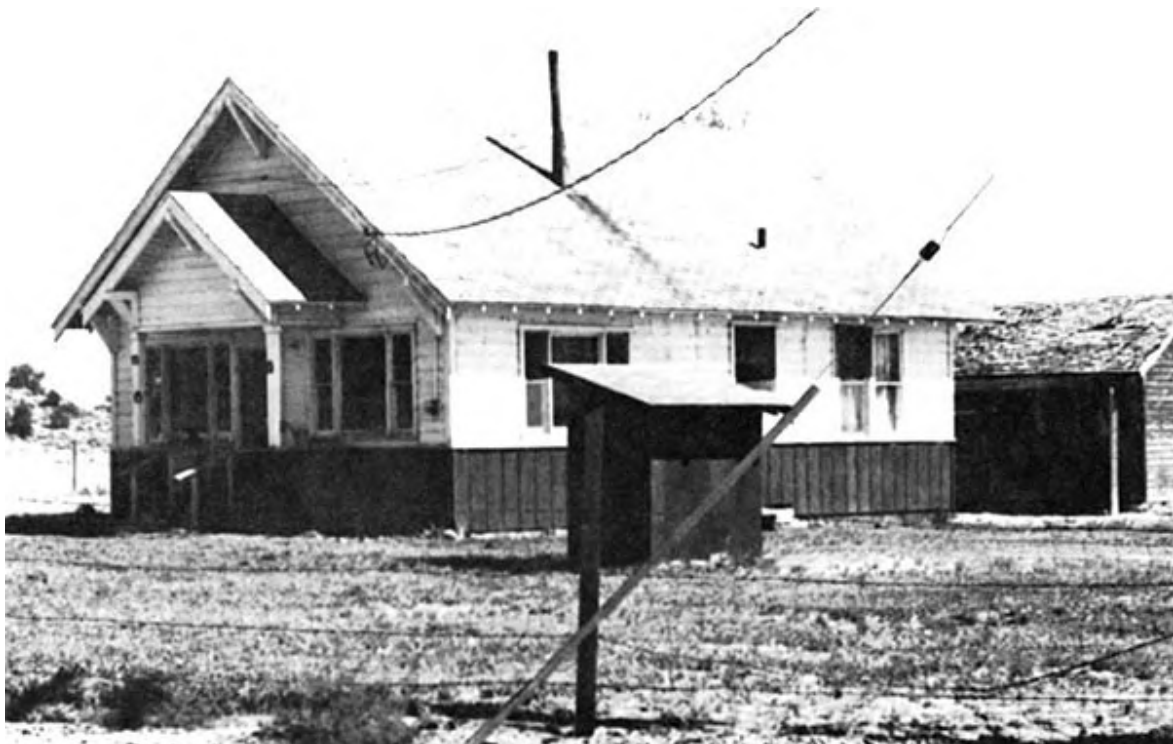


ca. 1935. Photo by Bob Dennis, from the collection of Bob Dais.





ca. 1940. Photo by Mildred Grant, donated by Roderick and Larry Grant. Siskiyou County Office of Education School History Collection.



ca. 1940. Siskiyou County Office of Education School History Collection.