

Hot Spring School District

The Hot Spring District was established in 1889. There is not much known about this district.

Originally there was an argument among settlers as to where the school house should be. The families of the coach relay station at the top of Topsy's Grade wanted the building there. The families living on the Klamath River wanted the school house farther down the river. They finally compromised, and the school was located approximately 16 miles northwest of Dorris at the foot of Topsy Grade on the Klamath River side.

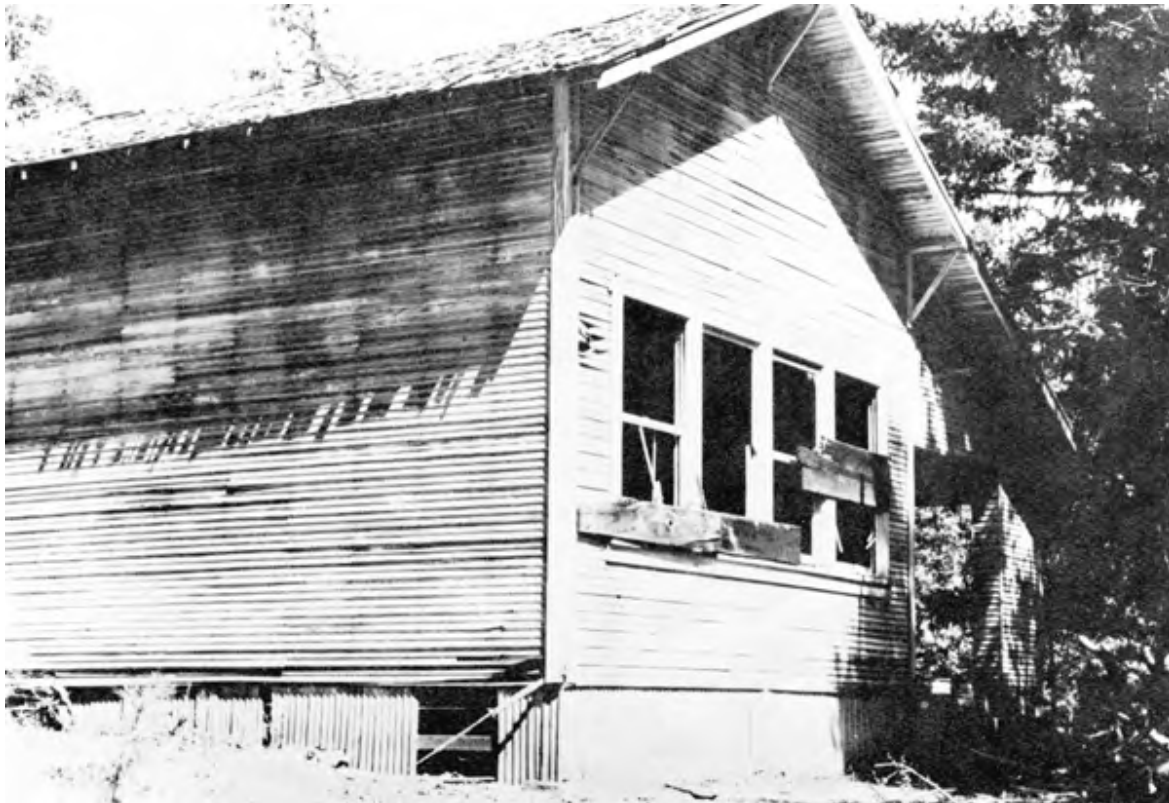
In 1899 the district was attached to the Oak Grove District.

Reference in board of Supervisors minutes:

Established: April 2, 1889 – Boundaries described (4-419)

July 18, 1898 – Lapsed and attached to Oak Grove (6-259_

January 5, 1899 – County Superintendent of Schools given authority to sell property (6-335)



Hot Spring School, date unknown. Siskiyou County Office of Education School History Collection.