

## **Tulelake School District**

The first legal public school district at Tulelake was formed in 1926. However, the first school in the area was a private school located three and a half miles north and two mile east of the present town of Tulelake. The second school, also private, was located two miles north of Tulelake and was known as the White School. This building was moved into town in 1926, when the Tulelake School District was formed. The building is still standing and is being used as a Grange Hall. The third building, the present school, is now in use.

In 1927, the school had three teachers; Miss Helen Howard, Mrs. Della Goldman, and Isabel Goldman.

In 1968, the Tennant District was unified with several schools in Modoc County. Then in 1971, this unified district was changed and Tulelake became part of a new unified district called Tulelake Basin Joint Unified District. It continues to receive educational service from Modoc County.

### **Reference in board of Supervisors minutes:**

Established: February 2, 1926 – No boundary description (14-73)

December 3, 1929 – Part of Tulelake District taken to form Winema School District (15-235)

August 22, 1932 – Matter of bonds (16-175, 16-186, 16-240)

November 5, 1935 – Matter of issuance and sale of bonds (17-121, 17-131)

November 2, 1936 – Matter of bond sale (14-240)

December 3, 1940 – Boundary change (18-410)

October 1, 1945 – Bonds (20-6)

November 5, 1945 – Bonds (20-19)

September 19, 1947 – Transfer of funds (20-325)

November 6, 1952 – Petition for boundary change (22-309)

July 20, 1954 – Matter of bond bids (23-233)



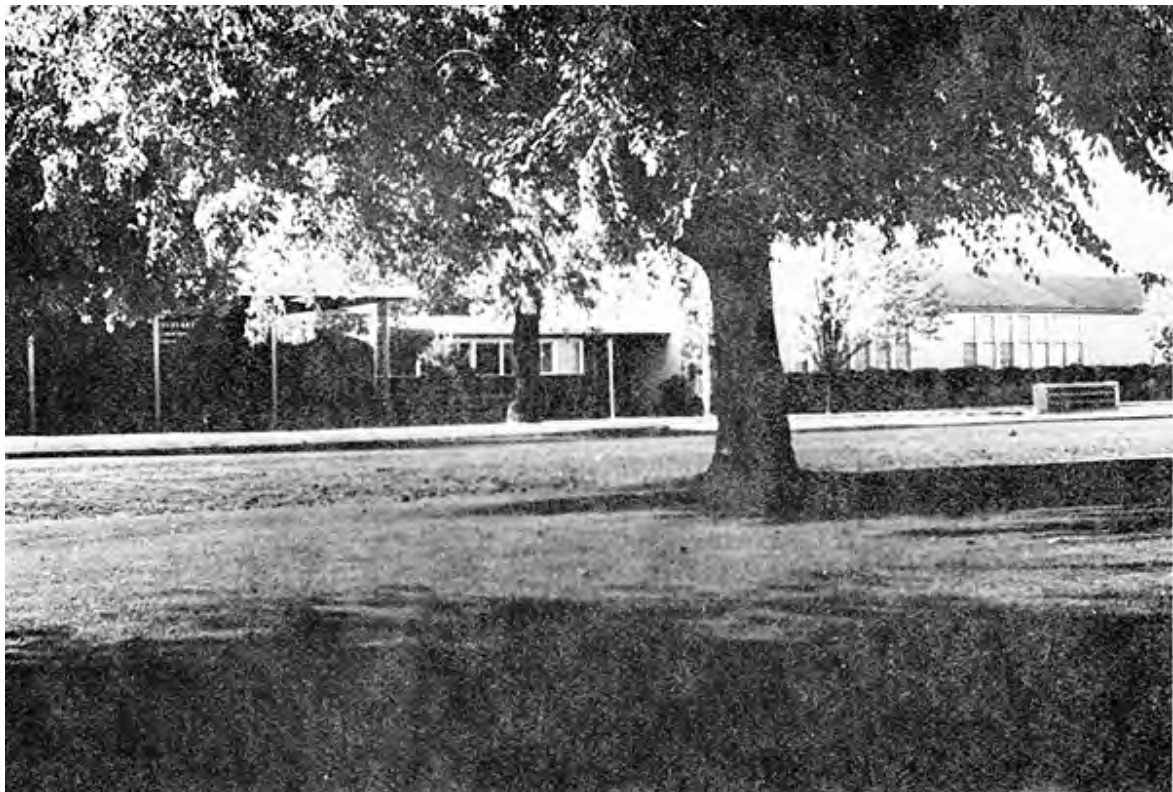
Tulelake Emergency School, 1929. Loaned by the Siskiyou County Public Library.



ca. 1940. Photo by Mildred Grant, donated by Roderick and Larry Grant.



Tulake School sign, ca. 1940. Siskiyou County Office of Education School History Collection.



Siskiyou County Office of Education School History Collection.